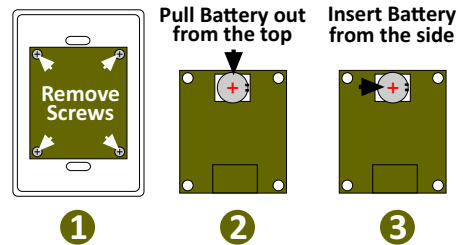


Button operation:

Press = ON/OFF/STOP DIMMING
 Hold = DIM UP/DOWN
 LED Indicator on button press:
 1 Flash = Normal operation
 2 Flashes = Battery Low

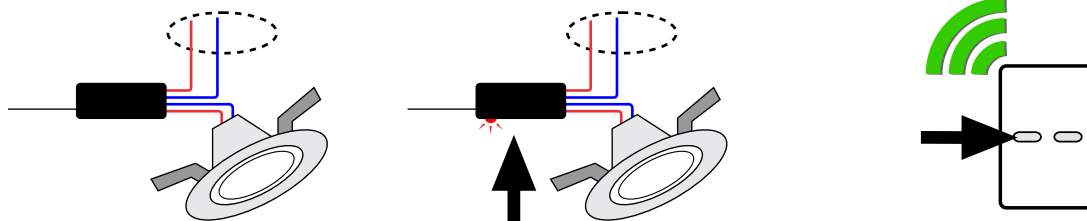
Battery replacement:



LED will flash 3 times to indicate successful power up.

Linking to a receiver:

- 1 Connect the receiver to the lights
- 2 Hold the LINK button until the LED starts flashing
- 3 Then press a button on the switch within 25 sec



To unlink a button:

Repeat steps 2&3.
 To clear all links in a Receiver: Hold the Link Button until the LED is ON solid (10 sec) then release.
 A Receiver can link up to 30 different buttons.
 Mount the Switch with double-sided tape or clip off the outer surround to expose standard 2x4 mounting holes.